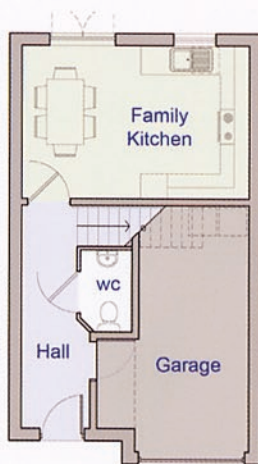
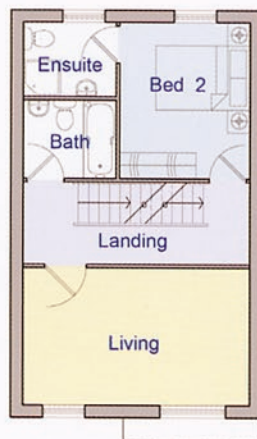


No. 5 Baptist Lane, Ossett

The Beech



GROUND FLOOR



FIRST FLOOR



SECOND FLOOR

Living Room	4.90 x 2.99 m	16'0" x 9'10"
Kitchen/Dining	4.90 x 3.32 m	16'0" x 10'10"
Bedroom 1	4.90 x 2.75 m	16'0" x 9' 0"
Bed 1 En-suite	3.38 x 1.70 m	11'1" x 5' 7"
Bedroom 2	3.40 x 2.83 m	11'2" x 9' 3"
Bed 2 En-suite	2.01 x 1.61 m	6'7" x 5' 3"
Bedroom 3	3.08 x 2.31 m	10'1" x 7' 6"
Bathroom	2.01 x 1.72 m	6'7" x 5' 8"